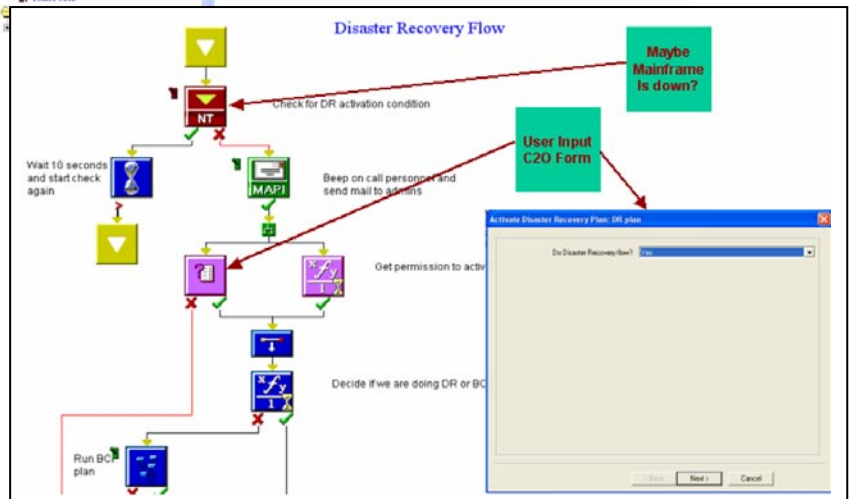
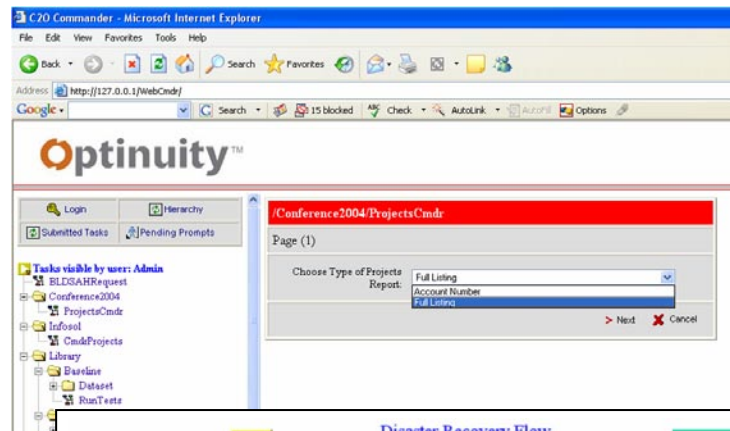


C20: The Enterprise Scheduling and Automation Solution

A simple, yet powerful and versatile, automated scheduling and operations solution for today's enterprise environments.

C20 has been designed to eliminate the effort and risk in automating your operations.

- ▲ Uses “drag-and-drop” graphical flowcharts to define all your processes and interdependencies.
- ▲ Synchronizes your jobs across platforms and sites using events, date and time or resources.
- ▲ Provides a global view and complete control of all your production tasks from a single console or tailored views based on your needs.



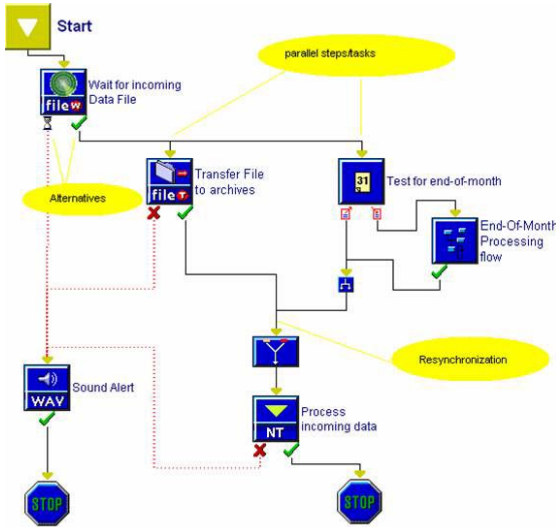
C20 can help to dramatically reduce your Operational Costs

- ▲ Costly operator “cockpit” errors and scheduling mistakes can be avoided through the automation and extensive monitoring.
- ▲ Operate around the clock with reduced staff.
- ▲ Reuse of common process flows.
- ▲ Automate inter-system dependent operations, like file transfers, without operator intervention or delays.
- ▲ Automatic paging, phoning or e-mailing of appropriate support staff upon any failure or designated incident.

C2O: Automated Scheduling and Operations for Today's Enterprise Environment

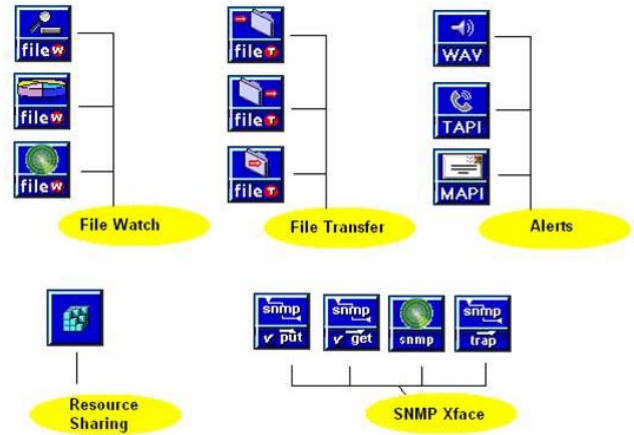
Task Flows

- ▲ Distributed process flowcharts
- ▲ All forms of intra-flow synchronization
- ▲ Runtime context management with variables
- ▲ Cross-process synchronization with shared resources



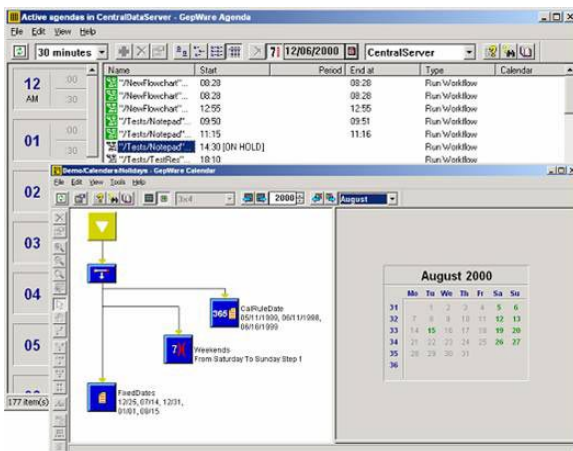
Rich Set of Automated Operations

- ▲ File transfer and remote file operations
- ▲ File monitoring (patterns, size, etc.)
- ▲ SNMP interface to network devices and monitors
- ▲ Resource locking, counters, alerts



Flexible Scheduling

- ▲ Extensive, reusable calendar rules
- ▲ Multiple agendas and agenda servers
- ▲ Detailed views of historical & planned tasks



Ad-hoc Processes

- ▲ Used for on-demand reports, recovery operations, etc. to be triggered by users
- ▲ Screen designer to capture process parameters
- ▲ Specialized client for requesting & tracking on-demand tasks

